

*A Discourse on the Dissection of a Monstrous Double Catt; read before the Dublin Society by Dr. Mullen.*

GENTLEMEN,

I Had given you an account before this time of a *Monstrous Catling* that I lately Dissected, but that my busyness would not give me leave to put it in writing till now.

When I met with it, 'twas dead, and I am perswaded that it was so brought forth, the Lungs being compact and free from *Air*; which they could not be, if it had ever inspir'd.

It was double from the Navell downwards, having 4 hind feet, two tails, two *Anus's* and two *Pudenda*, for they were Females. They were joyn'd in one Trunc at the Navel and were continu'd so upwards; but yet this Monster had two pair of fore feet, one of them on the back and the other on the breast. The head though single had two pair of ears, one Naturally Sited, and another at the hinder part of the head, between the *processus mammillares* to which the *Vertebrae* of both the Necks were joyn'd, for there were two back bones continu'd all the way to the head. Though the two bodys seem'd to be but one intire one above the Navell.

The 6th *Figure* expresses to the life its outward shape when placed on its back, for the Tails, Feet, Navell, Mouth, Nostrills and Ears, Naturally situated are represented in their full proportions.

There was only one Stomack under the Liver in the right side, reaching under another Liver in the left. The Guts were single till within 6 or 7 inches of the *Anus*, and there was a division into two branches, one

Z z

going

going to each fundament, below the division there were plainly to be seen two *Cæcums*, with in about 3 inches of the *Anus* each. There were two Livers one much smaller then the other; that which was in the right side was the least, the other lay lower down in the left side. They were both intire without any division or lobes. There was a *Vena Umbilicalis* inserted into each of them. There were two artery's inserted into the Liver in the left side, both coming from the *Aorta*, and these I shall call the *Celiacæ*. There was only one inserted into the Liver placed in the right side. There was no *Vena cava* below the Livers, for all the Veins coming from the lower parts entred the Livers as the *Vena Porta* does naturally. There was a branch of a Vein on each side proceeding from the Loins inserted into the back-parts of the Liver, and besides these there was not a branch to be seen but what was inserted into the middle of the Livers.

There were no *Vesiculæ felleæ* that I could find, and perhaps the reason I could not discover any, was, because of the tenderness of the Livers; for they were putrid before I got the *Catling*. There were two Kidneys on each side furnish'd with ureters. There was neither spleen nor *pancreas* in either side.

There was a double Diaphragm meeting in the middle between the two back-bones, and making a membrane, which to me seem'd to be a *Medastinum*; for it reached up to the *Thymus*.

There were two hearts in it, one placed above the other, and a little to the right side, it was much higher then ordinary, and it had a Vein coming to it from the little Liver in the right side, which (together with 3 other small Veins, one from each of the fore-feet and one from the head) furnish'd this heart with what blood was to be circulated by it. It had onely one auricle, and one Ventricle, so that it seem'd to be but half a heart.

There

There was a pretty large passage into the *Arteria Aorta*, the contrivance of which was very singular. For above this heart it was made like an Arch of a Circle, into which there was a direct passage from the heart for the blood. When I further examin'd this Artery I found that it went down on each side on the *Vertebræ* of the backs between the Kidneys and divided it self on each side after the usuall manner after it had lent each Kidney a branch, the Liver in the right side one, and the Liver in the left side two.

The 7th *Figure* expresses this, as by the explication of it shall appear.

Below the former a little towards the left side of it there was another half heart, having only one *Auricle* and one *Ventricle* like the former. This received little blood but what was transmitted from the large Liver in the left side by that that is called the *Truncus Ascendens* of the *Vena cava*.

The Artery carrying the blood from this heart was inserted into the Artery lately describ'd as well as that of the other heart.

So that if the blood circulated through either of them the whole Animal must necessarily be supply'd with blood; a contrivance not unlike that of the Arterys under the brain, where the *Arteria carotides* and *Vertebrales* doe empty themselves into one common channell from which all parts of the brain may easily be supply'd with blood. This is partly expressed by *Fig. 8th* but not so clearly as I could wish.

How far it is represented we shall see when we come to the explications of the *Figures*.

The head was join'd to two necks about the *processus Mamillares*. *Fig. 9th* represents the holes through which the *Medulla Oblongata* was continu'd into the *Spinalis*.

There were four orders of ribs, though the body was

but one above the Navell. That which outwardly seem'd to be a back was really the place where the ribs met, and which might be rather call'd the breast, though it wanted a *Sternum*.

The 10th *Figure* represents this;

*Fig. 7th* represents the Cat open'd so as that most parts are to be seen, where 1. represents the Stomack pull'd from behind both the Livers so as to be plainly seen. 2. The beginning of the guts below the pilorus. 3. The Division of the gut into two branches whereof one went to each *Anus*. 4. 4. The two *Cecums*. 5. 5. 5. 5. The two pair of Kidneys furnish'd with emulgent Artery's and Veins. 6. A large Liver in the left side much lower situated then the Liver in the right side. 7. The Liver in the right side with a Vein. 8. Comeing from the Kidneys of the same side after it had united above the emulgents. This supplys the office of the *Vena cava* and *Vena-porta*. 9. 9. Two large branches of the big Artery going into the body of the big Liver. 10. 10. 10. 10. The great Artery supplying both sides with blood and receiving of it from the two hearts. 11. The Vein bringing the blood from the lower parts of the left side into the Liver 6. of the same sides. 12. 12. The big Artery sending branches to each of the Kidneys.

13. The upper heart.

14. The Artery that supplied the head with blood.

15. 15. The axillary artery's.

16. The *Vena Cava* comeing from the Liver in the right side to the heart 13.

17. The passage from the said heart to the Aorta.

*Fig. 8th.* 1. The Liver in the left side freed from all things that kept it any way out of sight.

3. The *Vena Cava* passing from it to the lower heart 6.

2. A Skirt of the Diaphragm turn'd to the left side that the former Vein should better appear.

4. The

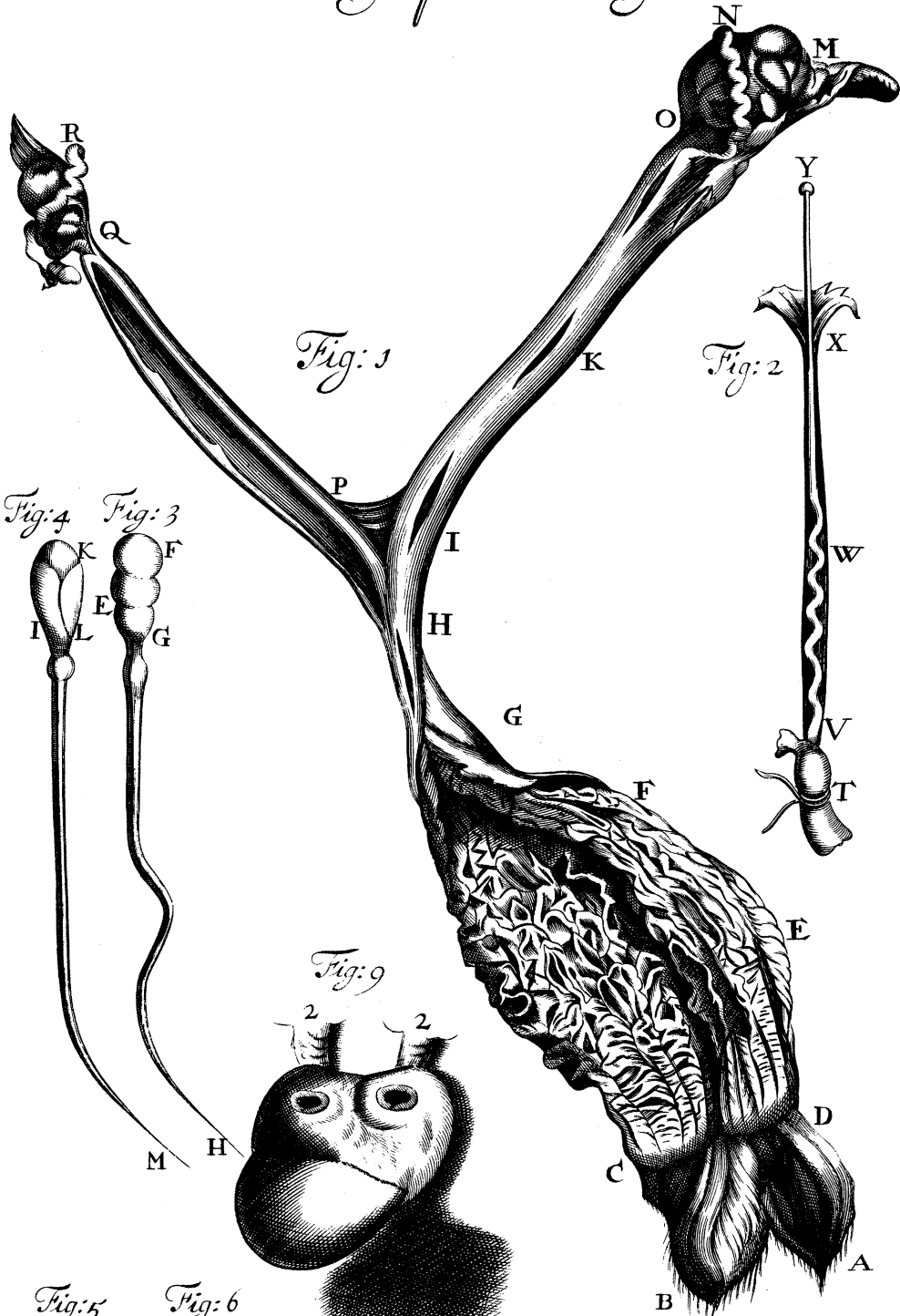
4. The Stomack displaced for the former reason.
5. 5. 5. 5. The Kidneys as formerly.
6. The other heart placed lower then the former and in its due situation
7. The upper heart drawn out of its place upwards that the other 6. with the passage 11. from it to the *Aorta* 9. 9. might be well represented.
8. The Liver in the right side doubl'd and turn'd over the heart 6. that it might be the better set forth.
9. 9. 9. The *Aorta* where it is not hid by the parts displaid for the former reason.
10. The Lungs not well represented.
11. The passage from the lower heart into the *Aorta*.

*Fig. 9th* This represents the Skull open'd and freed from the brain, that so the passage into the 2 back bones may be seen.

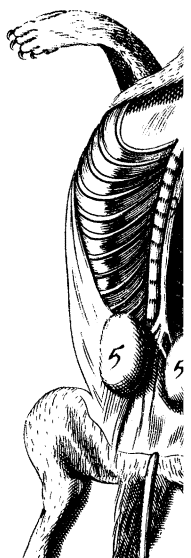
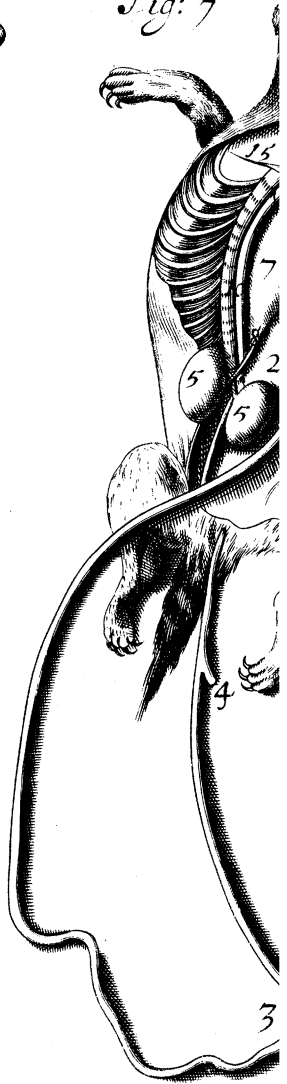
1. 1. The hollows through which the *Medulla Oblongata* was continu'd to the *Medulla Spinalis*.
2. 2. The two Necks.

*Fig. 10th.* 1. 1. The 2 diaphragms separated from the Cartilages of the Ribs, that their junctures may be seen.

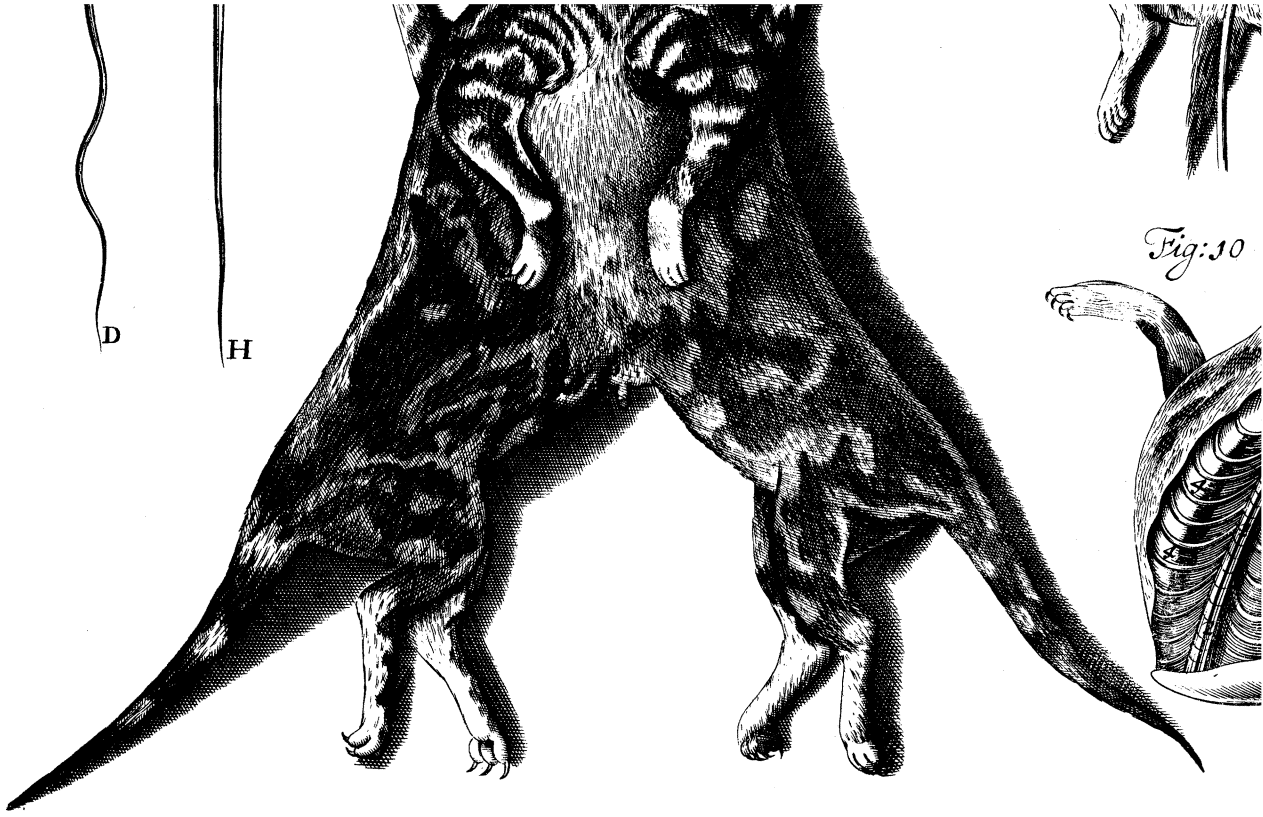
2. 2. 2. 2. The *Vertebræ* of both the backs.
3. 3. 3. 3. 3. 3. The juncture of the 2 Setts of Ribs that were at the back.
4. 4. 4. 4. The two Setts of Ribs that were joyn'd to the breast.
5. The tips of the Diaphragms pull'd downwards to shew the Ribs plainly.
6. 6. The *Vertebræ* of the 2 Necks.



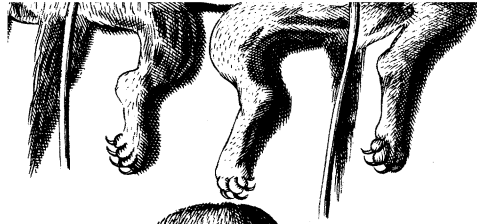
*Fig: 7*











*Fig: 30*

